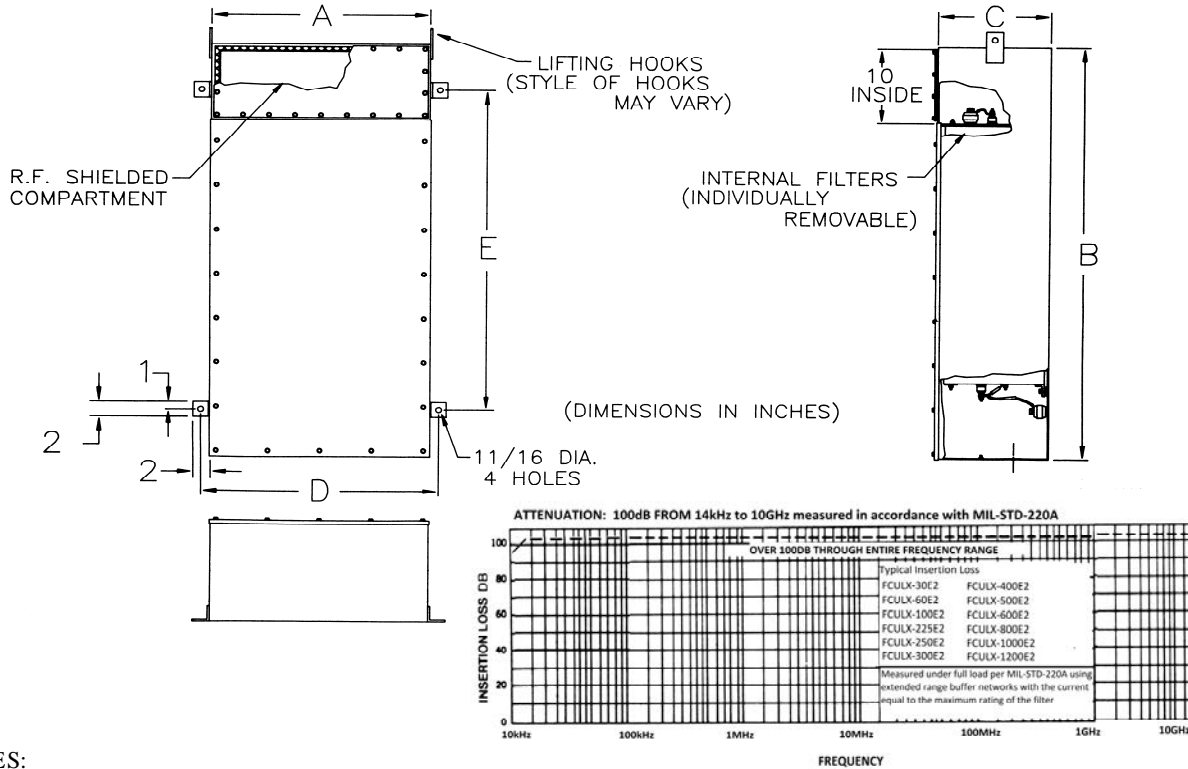




UL Listed Facility Filters Per UL Safety Specification 1283



NOTES:

1. Filters are listed per UL specification #1283
2. Temperature Range: Operating -55°C to +85°C
3. Enclosures are made from cold rolled steel with continuously welded seams
4. Filter ground path connecting surfaces shall be tin plated or stainless steel
5. Conduit hubs or clearance holes may be provided if specified when ordering
6. Each phase filter is individually removable
7. Internal filters are filled with a non-flammable impregnant and hemetically sealed
8. Legs for floor mounting may be provided if specified when ordering
9. Filters for 300AMP and up have 6" x 2" mounting U-Channel

Part Number	Current Rating (AMP)	Voltage Rating		Frequency Rating (Hz)	Dimensions (INCHES)					Weight Approx. (LBS)
		LG / LL VAC	VDC		A±060	B±060	C±060	D±060	E±060	
FCULX-4 X 30E2	4 x 30	277 / 480	600	60	28	38	6	32	26	220
FCULX-4 X 60E2	4 x 60	277 / 480	600	60	28	41	8	32	29	315
FCULX-4 X 100E2	4 x 100	277 / 480	600	60	38	48	10	42	36	325
FCULX-4 X 225E2	4 x 225	277 / 480	600	60	28	54	16	32	42	750
FCULX-4 X 250E2	4 x 250	277 / 480	600	60	28	54	16	32	42	750
FCULX-4 X 300E2	4 x 300	277 / 480	600	60	60	72	16	66	44	850
FCULX-4 X 400E2	4 x 400	277 / 480	600	60	60	72	16	66	44	975
FCULX-4 X 500E2	4 x 500	277 / 480	600	60	60	72	16	66	44	1075
FCULX-4 X 600E2	4 x 600	277 / 480	600	60	45	72	34	51	44	1600
FCULX-4 X 800E2	4 x 800	277 / 480	600	60	60	72	34	66	44	2400
FCULX-4 X 1000E2	4 x 1000	277 / 480	600	60	60	72	34	66	44	2500
FCULX-4 X 1200E2	4 x 1200	277 / 480	600	60	72	72	34	78	44	2750
FCULX-4 X 1500E2	4 x 1500	277 / 480	600	60	72	72	34	78	44	2900

*All Filter Cabinets available in 2 line and 3 line configuration

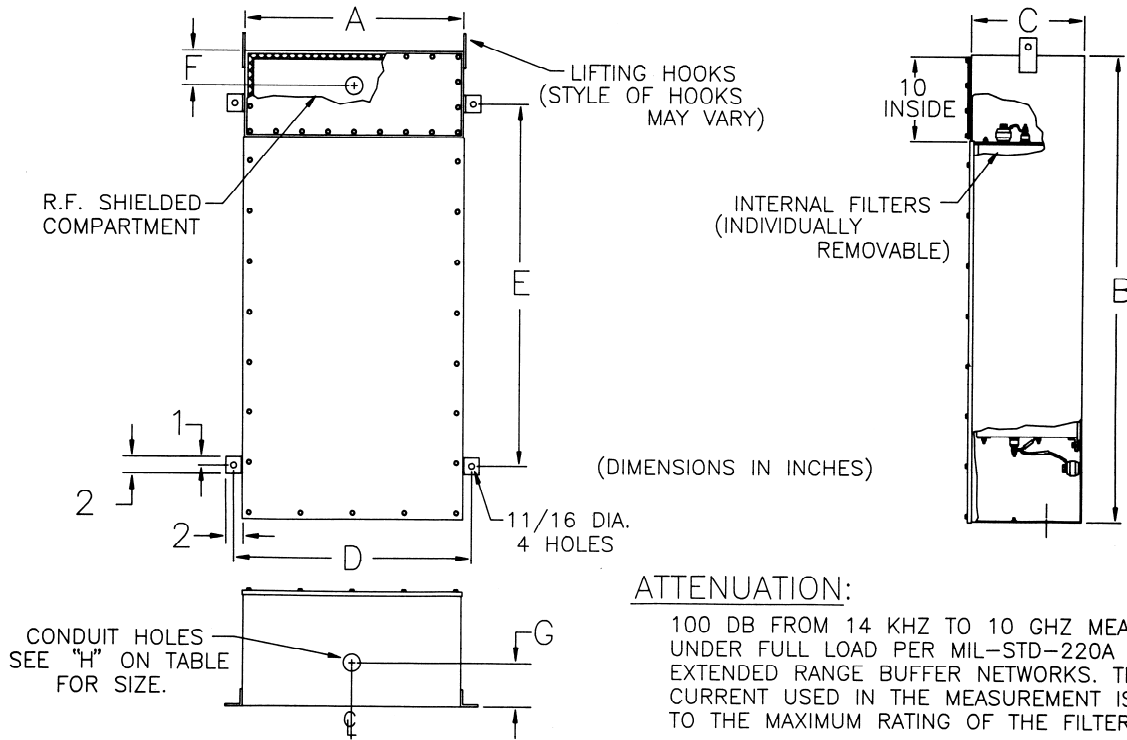
** All Filter Cabinets available in 100dB from 14kHz to 18GHz configuration

*** All Filter Cabinets available in Tempest configuration 130dB from 14kHz to 10GHz





UL Listed Facility Filters Per UL Safety Specification 1283



PART NUMBER	CURRENT (AMPS)	FREQ (HZ)	VOLTAGE RATING		DIMENSIONS (INCHES)								WEIGHT APPROX.(lbs.)
			VAC	VDC	A	B	C	D	E	F	G	H	
FCCO-XUL-(2) 2x5	4x5	60	277	600	14.00	40.00	18.00	16.25	28.0	3.00	2.0	.88	210
FCCO-XUL-(2) 2x5-400 HZ	4x5	400	277	600	14.00	40.00	18.00	16.25	28.0	3.00	2.0	.88	210
FCCO-XUL-600 VAC-(2)	4x5	60	600	1,000	14.00	40.00	18.00	16.25	28.0	3.00	2.0	.88	210
FCCO-XUL-600VAC-(2)	4x5	400	600	1,000	14.00	40.00	18.00	16.25	28.0	3.00	2.0	.88	210
FCCO-XUL-(2) 2x30	4x30	60	277	600	14.00	52.00	18.00	16.25	40.0	3.00	2.0	1.38	315
FCCO-XUL-(2) 2x30-400	4x30	400	277	600	14.00	52.00	18.00	16.25	40.0	3.00	2.0	1.38	315
FCCO-XUL-600VAC-(2)	4x30	60	600	1,000	14.00	52.00	18.00	16.25	40.0	3.00	2.0	1.38	315
FCCO-XUL-600 VAC-(2)	4x30	400	600	1,000	14.00	52.00	18.00	16.25	40.0	3.00	2.0	1.38	315
FCCO-XUL-4x100	4x100	60	277	600	25.00	65.00	15.00	27.25	53.0	4.00	5.0	2.00	570
FCCO-XUL-4x100-400 HZ	4x100	400	277	600	25.00	65.00	15.00	27.25	53.0	4.00	5.0	2.00	570
FCCO-XUL-600VAC-4x100	4x100	60	600	1,000	25.00	65.00	15.00	27.25	53.0	4.00	5.0	2.00	570
FCCO-XUL-600 VAC-4x1	4x100	400	600	1,000	25.00	65.00	15.00	27.25	53.0	4.00	5.0	2.00	570
FCCO-XUL-4x225	4x225	60	277	600	30.00	65.00	27.00	32.25	53.0	6.00	5.0	3.00	1,000
FCCO-XUL-4x225-400 HZ	4x225	400	277	600	30.00	65.00	27.00	32.25	53.0	6.00	5.0	3.00	1,000
FCCO-XUL-600 VAC-4x225	4x225	60	600	1,000	30.00	65.00	27.00	32.25	53.0	6.00	5.0	3.00	1,000
FCCO-XUL-600VAC-	4x225	400	600	1,000	30.00	65.00	27.00	32.25	53.0	6.00	5.0	3.00	1,000

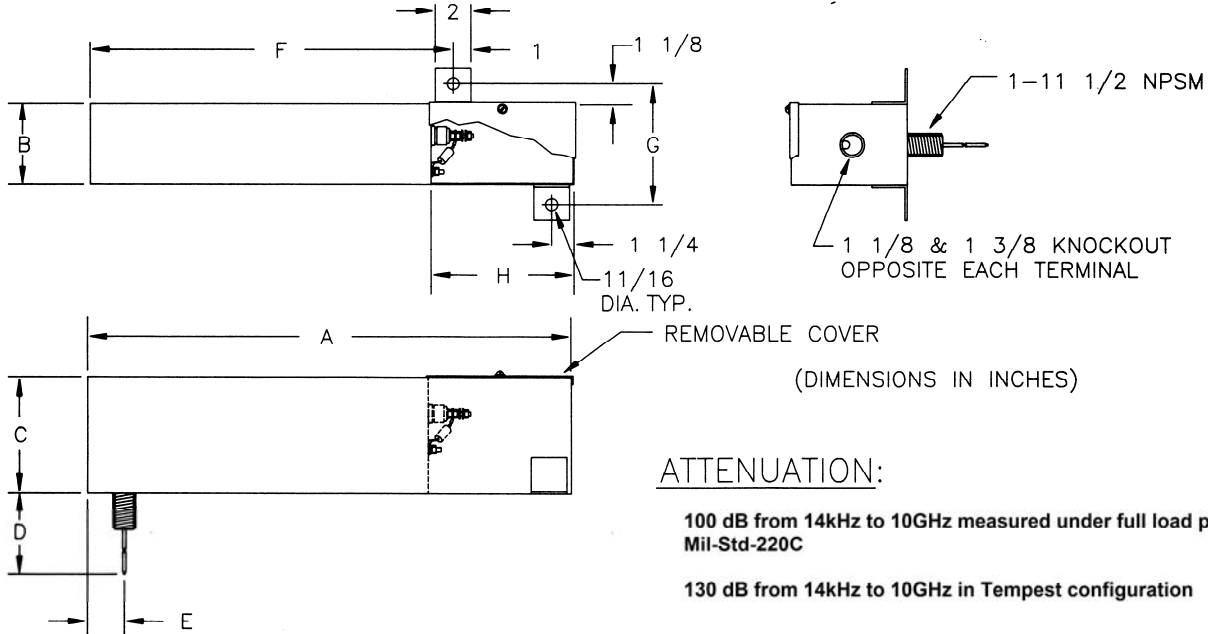
NOTES:

1. Individual, UL listed, replacement filters are available
Example: "FCCO-XUL-4x100-400HZ" all dimensions are the same as 60HZ units
2. Operating temperature range: -55°C to + 85°C
3. 100 & 225 AMP assemblies are also available for 3 phase 3 wire systems





UL Listed Facility Filters Per UL Safety Specification 1283



PART NO	CURRENT RATING (AMP)	VOLTAGE RATING (VAC)	FREQ RATING (HZ)	WIRE SIZE	DIMENSIONS (INCHES)							
					A	B	C	D	E	F	G	H
FC-962	2 x 5	277	0-60	#10	24	7	4	36	1.75	19.25	9.25	6
FC-962A	2 x 5	277	0-400	#10	24	7	4	36	1.75	19.25	9.25	6
FC-1407	2 x 5	600	0-60	#10	24	8	7	36	1.75	19.25	10.25	6
FC-1407A	2 x 5	600	0-400	#10	24	8	7	36	1.75	19.25	10.25	6
FC-943	2 x 30	277	0-60	#10	24	7	7	36	1.75	19.25	9.25	6
FC-943A	2 x 30	277	0-400	#10	24	7	7	36	1.75	19.25	9.25	6
FC-1387	2 x 30	600	0-60	#10	24	8	7	36	1.75	19.25	10.25	6
FC-1387A	2 x 30	600	0-400	#10	24	8	7	36	1.75	19.25	10.25	6
FC-944	100	277	0-60	#2	34	4.50	6.50	36	2	26.25	6.75	9
FC-944A	100	277	0-400	#2	34	4.50	6.50	36	2	26.25	6.75	9
FC-1197	100	600	0-60	#2	34	8	6.50	36	2	26.25	10.25	9
IEC-1197A	100	600	0-400	#2	34	8	6.50	36	2	26.25	10.25	9
FC-945	250	277	0-60	250 MCM	41	8	8	36	2	27.25	10.25	15
FC-945A	250	277	0-400	250 MCM	41	8	8	36	2	27.25	10.25	15
FC-1198	250	600	0-60	250 MCM	41	8	8	36	2	27.25	10.25	15
FC-1198A	250	600	0-400	250 MCM	41	8	8	36	2	27.25	10.25	15

1. Each field wiring terminal and ground stud is provided with a set screw type lug
2. Each circuit is provided with discharge resistors
3. Each Filter available in Tempest configuration

**FIL-COIL CO. INC. - THE FIRST
COMPANY TO BE LISTED AS MANUFACTURER OF
FACILITY FILTERS PER UL SAFETY SPECIFICATION #1283**

